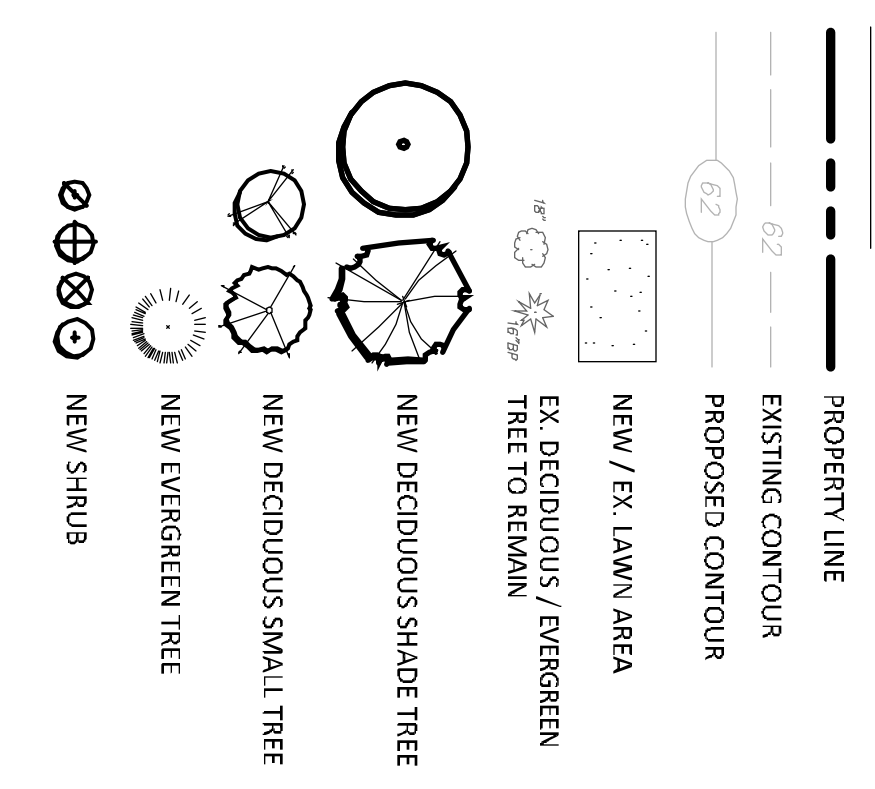




LEGEND



PLANT LIST

QTY	KEY	BOTANICAL NAME	COMMON NAME	SIZE	ROOT	STREET TREE TREE SIZE	REMARKS	PLANTING HEIGHT	MATURE HEIGHT
1	QB	QUERCUS BICOLOR	SWAMP WHITE OAK	2-2 1/2" CAL.	B&B	0	NATIVE, SHADE, WILDLIFE	13-41 HT.	60-70 HT.
2	SO	QUERCUS IMBRICARIA	SHINGLE OAK	2-2 1/2" CAL.	B&B	0	NATIVE, SHADE, WILDLIFE	13-14 HT.	50-60 HT.
1	LS	LIQUIDAMBAR STYRACIA SILHOUETTE	SLENDER SILHOUETTE SWEET GUM	1 1/2-2" CAL.	B&B	0	NATIVE, COLUMNAR TO 6'	10-12 HT.	45-50 HT.
1	SD	MALUS SNOWDRIFT	SNOWDRIFT CRABAPPLE	2-2 1/2" CAL.	B&B	0	WHITE FLOWERS	12-13 HT.	18-20 HT.
3	YC	PRUNUS X YEDONENSIS	YOSHINO CHERRY	2-2 1/2" CAL.	B&B	0	LIGHT PINK FLOWERS	12-13 HT.	15-20 HT.
1	BB	MAGNOLIA GRANDIFLORA	BRACKEN'S BEAUTY	6-7 HT.	B&B	0	EVERGREEN TREE	20-25 HT.	30-35 HT.
10	GG	THUJA GREEN GIANT	GREEN GIANT ARBOVITAE	5-6 HT.	B&B	0	EVERGREEN TREE, FAST GROWTH	5-6 HT.	18-22 HT.
18	DS	THUJA OCCIDENTALIS 'DEERHOOT'S SPIRE'	DEERHOOT'S SPIRE ARBOVITAE	5-6 HT.	B&B	0	EVERGREEN TREE, COLUMNAR	5-6 HT.	18-22 HT.
10	TO	THUJA OCCIDENTALIS 'EMERALD GREEN'	EMERALD GREEN ARBOVITAE	6-7 HT.	B&B	0	EVERGREEN TREE, NARROW	6-7 HT.	18-22 HT.
6	HY	HYDRANGEA 'THE ORIGINAL'	THE ORIGINAL HYDRANGEA	2-3 HT.	CONT.	0	BLUE FLOWER	2-5 HT.	4 HT.
6	LL	HYDRANGEA PANICULATA 'LITTLE LIME'	LITTLE LIME HYDRANGEA	2-3 HT.	CONT.	0	WHITE FLOWER	2-5 HT.	4 HT.
1	LM	HYDRANGEA 'LIME LIGHT'	LIME LIGHT HYDRANGEA	30-36" HT.	CONT.	0	WHITE FLOWER	2.5 HT.	4 HT.
16	IG	ILEX GLABRA 'SHAMROCK'	SHAMROCK INGEBERRY	2-3 HT.	CONT.	0	EVERGREEN, NATIVE	2 HT.	3 HT.
4	RC	RHOODODENDRON 'CHIONIDES'	CHIONIDES RHOODODENDRON	3-4 HT.	B&B	0	EVERGREEN, WHITE FLOWER	2 HT.	3 HT.
9	WR	ROSA 'WHITE WEDLAND'	WHITE WEDLAND ROSE	2-3 SPR.	CONT.	0	SPREADING, WHITE	2 HT.	3 HT.
8	SB	SPHAENA 'SHIROBANA'	SHIROBANA SPHENA	18-24" HT.	CONT.	0	WHITE AND PINK FLOWERS	18 HT.	3 HT.
1	SY	SPRINGA VULGARIS 'CONGO'	CONGO LILAC	4-5 HT.	B&B	0	PURPLE, FRAGRANT	4-5 HT.	9-10 HT.
2	TH	THUJA OCCIDENTALIS 'HOLMSTRUP'	HOLMSTRUP ARBOVITAE	3-4 HT.	B&B	0	EVERGREEN	7 HT.	6-7 HT.
6	VT	VIBURNUM TRILOBUM 'VENIWORK'	AMERICAN GRANDBERRYBUSH	3-4 HT.	B&B	0	NATIVE	8-12 HT.	15-18 HT.
10	HR	HEMISOCALUS 'HAPPY RETURN'	HAPPY RETURN DAVIDY	1 GAL.	B&B	0	YELLOW DAVIDY	8-12 HT.	15-18 HT.
18	LB	SCHIZACHYRIUM SCOPARIUM 'CAROUSEL'	CAROUSEL LITTLE BLUESTEM	1 GAL.	N/A	N/A	NATIVE GRASS	12-18 HT.	24-30 HT.

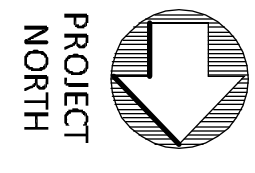
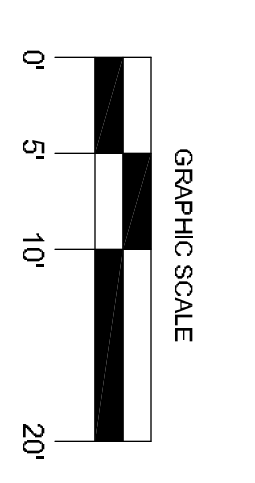
STREET TREE CHART

(FOR STREET TREES ON CITY LAND OR WITHIN 10' OF STREETSCAPE PROPERTY LINE)

STREETSCAPE ROAD AREA	TOTAL STREET FRONTAGE (L.F)	REQUIRED STREET TREES (FRONTAGE/25)	STREET TREES EXISTING	STREET TREES PROPOSED	NUMBER OF STREET CORNERS	TREES SUBJECT TO FEE PAYMENT (STREET TREES REQUIRED - STREET TREES EXISTING - STREET TREES PROPOSED - CORNERS)	FEE IN LIEU REQUIRED (\$2500 PER TREE SUBJECT TO FEE PAYMENT)
MAPLE TREE AVENUE	55.0'	2.2	0	3	0	(2.2 - 0 - 3 - 0 = -0.8)	\$0
SUBTOTAL:							\$0

NOTES:

- EXISTING AND PROPOSED SITE INFORMATION TAKEN FROM A DIGITAL AUTOCADED SITE PLAN SUPPLIED BY DANIELA SUWERTING & ENGINEERING, P.C.
- CONTACT "CALL BEFORE YOU DIG" AT 1-800-922-4455 TO HAVE UNDERGROUND UTILITY LINES MARKED BY THEM PRIOR TO START OF ANY EXCAVATION WORK.
- EXACT LOCATION OF PROPOSED PLANTINGS AND SPECIES TYPES MAY VARY FROM THIS PLAN BASED ON SITE PLAN REVISIONS AND/OR ACTUAL FIELD CONDITIONS.
- PLANT SPECIES SUBSTITUTIONS MAY BE MADE WITH THE APPROVAL OF THE PROJECT LANDSCAPE ARCHITECT PRIOR TO PLANTING. SUBSTITUTED PLANTS SHALL BE AT AN EQUAL OR GREATER SIZE AS NOTED USING A SIMILAR TREE PLANT.
- PLANTING METHODS SHALL BE IN ACCORDANCE WITH THE "AMERICAN STANDARDS FOR NURSERY STOCK", LATEST EDITION, AS PUBLISHED BY THE AMERICAN NURSERY & LANDSCAPE ASSOCIATION.
- THE CONTRACTOR SHALL VERIFY WITH THE PROJECT ENGINEER THAT THE NEW PLANTINGS DO NOT INTERFERE WITH EXISTING AND/OR PROPOSED UTILITIES, SIGHT LINES, AND/OR STRUCTURES.
- THIS PLAN FOR PLANTING PURPOSES ONLY. SEE PLANS BY OTHERS FOR ADDITIONAL INFORMATION.
- SPRAY NEW PLANTINGS IMMEDIATELY AFTER INSTALLATION WITH WHITE-TAILED DEER REPELLENT AND CONTINUE AS NEEDED TO MAINTAIN PLANTS FREE OF SIGNIFICANT DEER BROWNING.
- SEED LAWN AREAS WITH A HIGH QUALITY FESCUE AND BLUEGRASS SEED MIXTURE. APPLY SOIL AMENDMENTS AND SEED AREAS AT THE METHODS AND RATE RECOMMENDED BY THE MANUFACTURER.



<p>REVISIONS:</p> <table border="1"> <thead> <tr> <th>NO.</th> <th>DATE</th> <th>DESCRIPTION</th> </tr> </thead> <tbody> <tr> <td>4</td> <td>11.12.24</td> <td>PER CITY COMMENTS</td> </tr> <tr> <td>3</td> <td>8.2.24</td> <td>REV. SITE PLAN</td> </tr> <tr> <td>2</td> <td>11.21.23</td> <td>REV. SITE PLAN</td> </tr> <tr> <td>1</td> <td>8.10.23</td> <td>REV. SITE PLAN</td> </tr> </tbody> </table>	NO.	DATE	DESCRIPTION	4	11.12.24	PER CITY COMMENTS	3	8.2.24	REV. SITE PLAN	2	11.21.23	REV. SITE PLAN	1	8.10.23	REV. SITE PLAN	<p>DRAWING TITLE:</p> <p>LANDSCAPE PLAN - ALT. 1</p>
NO.	DATE	DESCRIPTION														
4	11.12.24	PER CITY COMMENTS														
3	8.2.24	REV. SITE PLAN														
2	11.21.23	REV. SITE PLAN														
1	8.10.23	REV. SITE PLAN														
<p>ENVIRONMENTAL LAND SOLUTIONS, LLC Landscape Architecture and Environmental Planning 8 KNIGHT STREET, SUITE 203 NORWALK, CONNECTICUT 06851 Tel: (203) 855-7879 Fax: (203) 855-7896 info@elslinc.net www.elslinc.net</p>	<p>PROJECT:</p> <p>31 MAPLE TREE, LLC 31 MAPLE TREE AVENUE STAMFORD, CONNECTICUT</p>															
<p>DATE:</p> <p>2.9.23</p>	<p>SCALE:</p> <p>1"=10'</p>															
<p>DRAWING NO.:</p> <p>LP.1alt</p>																