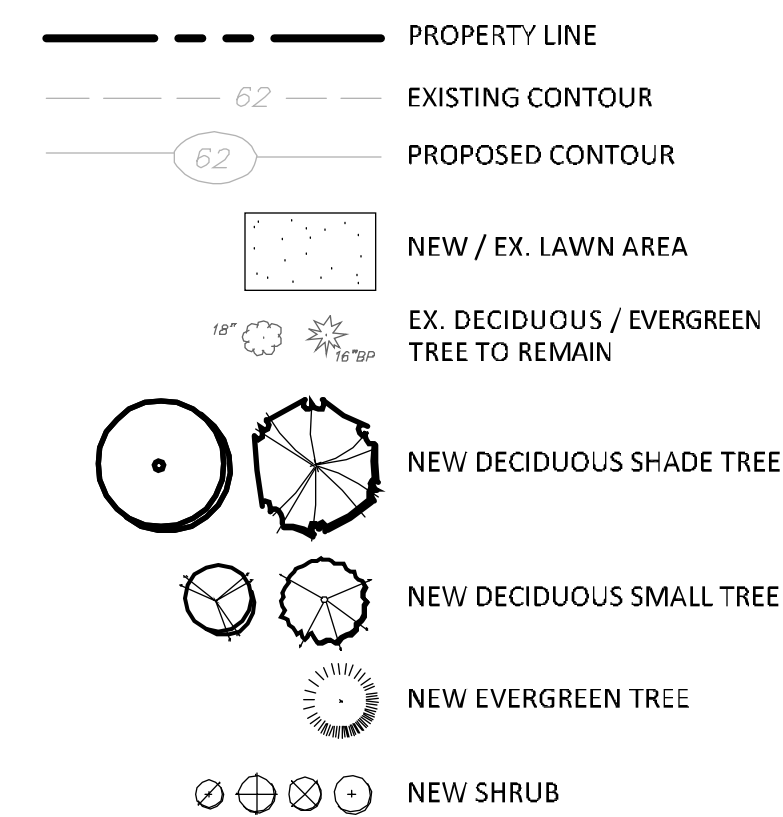


**LEGEND**



**PLANT LIST**

QTY	KEY	BOTANICAL NAME	COMMON NAME	SIZE	ROOT	STREET TREE	TREE SIZE	REMARKS	PLANTING HEIGHT	MATURE HEIGHT
1	QB	QUERCUS BICOLOR	SWAMP WHITE OAK	2-2 1/2" CAL.	B&B	0	LARGE	NATIVE, SHADE, WILDLIFE	13-14" HT.	60-70" HT.
2	SO	QUERCUS IMBRICARIA	SHINGLE OAK	2-2 1/2" CAL.	B&B	0	LARGE	NATIVE, SHADE, WILDLIFE	13-14" HT.	50-60" HT.
1	SD	MALUS 'SNOWDRIFT'	SNOWDRIFT CRABAPPLE	2-2 1/2" CAL.	B&B	0	MEDIUM	WHITE FLOWERS	12-13" HT.	18-20" HT.
3	YC	PRUNUS X YEDOENSIS	YOSHINO CHERRY	2-2 1/2" CAL.	B&B	0	SMALL	LIGHT PINK FLOWERS	12-13" HT.	15-20" HT.
1	BB	MAGNOLIA GRANDIFLORA 'BRACKEN'S BEAUTY'	BRACKEN'S BEAUTY MAGNOLIA	6-7' HT.	B&B	0	SMALL	EVERGREEN TREE	6-7' HT.	20-25" HT.
10	GG	THUJA 'GREEN GIANT'	GREEN GIANT ARBORVITAE	5-6' HT.	B&B	0	MEDIUM	EVERGREEN TREE, FAST GROWTH	5-6' HT.	30-35" HT.
18	TO	THUJA OCCIDENTALIS 'EMERALD GREEN'	EMERALD GREEN ARBORVITAE	6-7' HT.	B&B	0	MEDIUM	EVERGREEN TREE, COLUMNAR	6-7' HT.	18-22" HT.
6	HY	HYDRANGEA 'THE ORIGINAL'	THE ORIGINAL HYDRANGEA	2-3' HT.	CONT.	N/A	N/A	BLUE FLOWER	2.5' HT.	4' HT.
6	LL	HYDRANGEA PANICULATA 'LITTLE LIME'	LITTLE LIME HYDRANGEA	2-3' HT.	CONT.	N/A	N/A	WHITE FLOWER	2-3' HT.	4' HT.
1	LM	HYDRANGEA 'LIME LIGHT'	LIME LIGHT HYDRANGEA	30-36" HT.	CONT.	N/A	N/A	WHITE FLOWER	2.5' HT.	4' HT.
6	SJ	HYPERICUM FRONDOSUM 'SUNBURST'	SUNBURST ST. JOHNSWORT	18-24" HT.	CONT.	N/A	N/A	NATIVE, YELLOW FLOWER	2' HT.	3' HT.
9	IS	ILEX CRENATA 'STEEDS'	STEEDS HOLLY	3-4' HT.	CONT.	N/A	N/A	EVERGREEN	3-4' HT.	6-7' HT.
16	IG	ILEX GLABRA 'SHAM/ROCK'	SHAMROCK INKBERRY	2-3' HT.	CONT.	N/A	N/A	EVERGREEN, NATIVE	2' HT.	3' HT.
4	RC	RHODODENDRON 'CHIONOIDES'	CHIONOIDES RHODODENDRON	3-4' HT.	B&B	N/A	N/A	EVERGREEN, WHITE FLOWER	3' HT.	5' HT.
8	WR	ROSA 'WHITE MEIDLAND'	WHITE MEIDLAND ROSE	2-3' SPR.	CONT.	N/A	N/A	SPREADING, WHITE	2' HT.	3' HT.
8	SB	SPRIAEA 'SHIROBANA'	SHIROBANA SPIREA	18-24" HT.	CONT.	N/A	N/A	WHITE AND PINK FLOWERS	18" HT.	3' HT.
1	SY	SYRINGA VULGARIS 'CONGO'	CONGO LILAC	4-5' HT.	B&B	N/A	N/A	PURPLE, FRAGRANT	4-5' HT.	9-10' HT.
2	TH	THUJA OCCIDENTALIS 'HOLMSTRUP'	HOLMSTRUP ARBORVITAE	3-4' HT.	B&B	N/A	N/A	EVERGREEN	3-4' HT.	7' HT.
6	VT	VIBURNUM TRILOBUM 'WENTWORTH'	AMERICAN CRANBERRYBUSH	3-4' HT.	B&B	N/A	N/A	NATIVE	3-4' HT.	6-7' HT.
17	LR	LIRIOPE MUSCARI 'ROYAL PURPLE'	ROYAL PURPLE LIRIOPE	1 GAL.	N/A	N/A	N/A	EVERGREEN, GRASS-LIKE	8-12" HT.	15-18" HT.
34	PH	PENNISETUM ALOPECUROIDES 'HAMELN'	DWARF HAMELN GRASS	1 GAL.	N/A	N/A	N/A	ORNAMENTAL GRASS	12-15" HT.	18-24" HT.

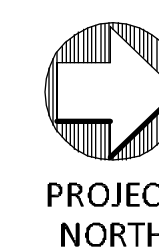
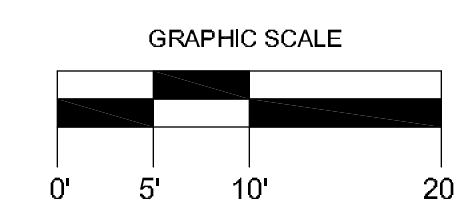
**NOTES:**

- EXISTING AND PROPOSED SITE INFORMATION TAKEN FROM A DIGITAL AUTOCADD SITE PLAN SUPPLIED BY D'ANDREA SURVEYING & ENGINEERING, PC.
- CONTACT "CALL BEFORE YOU DIG" AT 1-800-922-4455 TO HAVE UNDERGROUND UTILITY LINES MARKED BY THEM PRIOR TO START OF ANY EXCAVATION WORK.
- EXACT LOCATION OF PROPOSED PLANTINGS AND SPECIES TYPES MAY VARY FROM THIS PLAN BASED ON SITE PLAN REVISIONS AND/OR ACTUAL FIELD CONDITIONS.
- PLANT SPECIES SUBSTITUTIONS MAY BE MADE WITH THE APPROVAL OF THE PROJECT LANDSCAPE ARCHITECT PRIOR TO PLANTING. SUBSTITUTED PLANTS SHALL BE AT AN EQUAL OR GREATER SIZE AS NOTED USING A SIMILAR TYPE PLANT.
- PLANTING METHODS SHALL BE IN ACCORDANCE WITH THE "AMERICAN STANDARDS FOR NURSERY STOCK", LATEST EDITION, AS PUBLISHED BY THE AMERICAN NURSERY & LANDSCAPE ASSOCIATION.
- THE CONTRACTOR SHALL VERIFY WITH THE PROJECT ENGINEER THAT THE NEW PLANTINGS DO NOT INTERFERE WITH EXISTING AND/OR PROPOSED UTILITIES, SIGHT LINES, AND/OR STRUCTURES.
- THIS PLAN FOR PLANTING PURPOSES ONLY. SEE PLANS BY OTHERS FOR ADDITIONAL INFORMATION.
- SPRAY NEW PLANTINGS IMMEDIATELY AFTER INSTALLATION WITH A WHITE-TAILED DEER REPELLENT AND CONTINUE AS NEEDED TO MAINTAIN PLANTS FREE OF SIGNIFICANT DEER BROWSING.
- SEED LAWN AREAS WITH A HIGH QUALITY FESCUE AND BLUEGRASS SEED MIXTURE. APPLY SOIL AMENDMENTS AND SEED AREAS AT THE METHODS AND RATE RECOMMENDED BY THE MANUFACTURER.

**STREET TREE CHART**

(FOR STREET TREES ON CITY LAND OR WITHIN 10' OF STREETScape PROPERTY LINE)

STREETScape ROAD AREA	TOTAL STREET FRONTAGE (LF)	REQUIRED STREET TREES (FRONTAGE/2.5)	STREET TREES EXISTING	STREET TREES PROPOSED	NUMBER OF STREET CORNERS	TREES SUBJECT TO FEE PAYMENT (STREET TREES REQUIRED - STREET TREES EXISTING - STREET TREES PROPOSED - CORNERS)	FEE IN LIEU REQUIRED (\$2500 PER TREE SUBJECT TO FEE PAYMENT)
MAPLE TREE AVENUE	55.0'	2.2	0	3	0	0 (2.2 - 0 - 3 - 0 = -0.8)	\$0
SUBTOTAL:							\$0



REVISIONS:			DRAWING TITLE:	
3	8.2.24	REV. SITE PLAN	LANDSCAPE PLAN	
2	11.21.23	REV. SITE PLAN	PROJECT:	
1	8.10.23	REV. SITE PLAN	31 MAPLE TREE, LLC 31 MAPLE TREE AVENUE STAMFORD, CONNECTICUT	
SEAL:			DATE:	2.9.23
ENVIRONMENTAL LAND SOLUTIONS, LLC Landscape Architecture and Environmental Planning 8 KNIGHT STREET, SUITE 203 NORWALK, CONNECTICUT 06851 Tel: (203) 855-7879 Fax: (203) 855-7836 info@elsllc.net www.elsllc.net			SCALE:	1"=10'
DRAWING NO.:			LP.1	