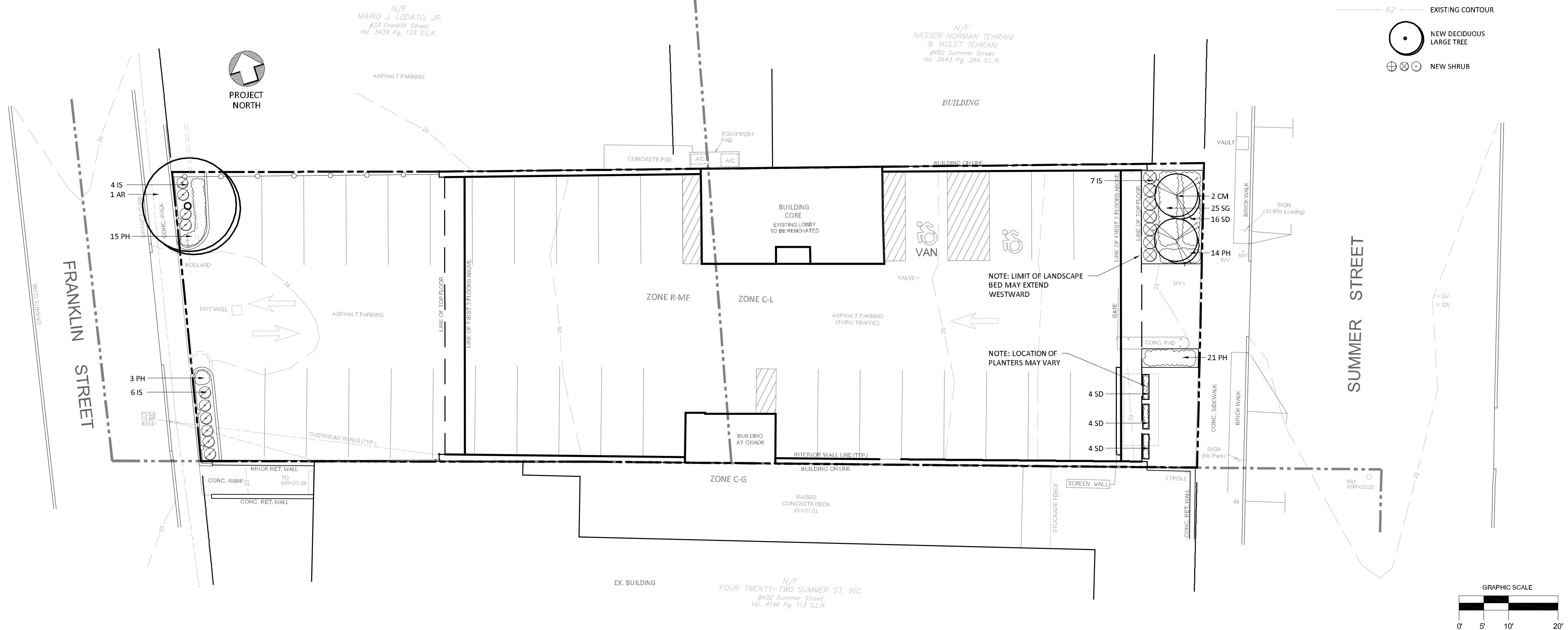


LEGEND

- PROPERTY LINE
- NEW FENCE
- EXISTING CONTOUR
- NEW DECIDUOUS LARGE TREE
- NEW SHRUB



PLAN

SCALE: 1"=10'

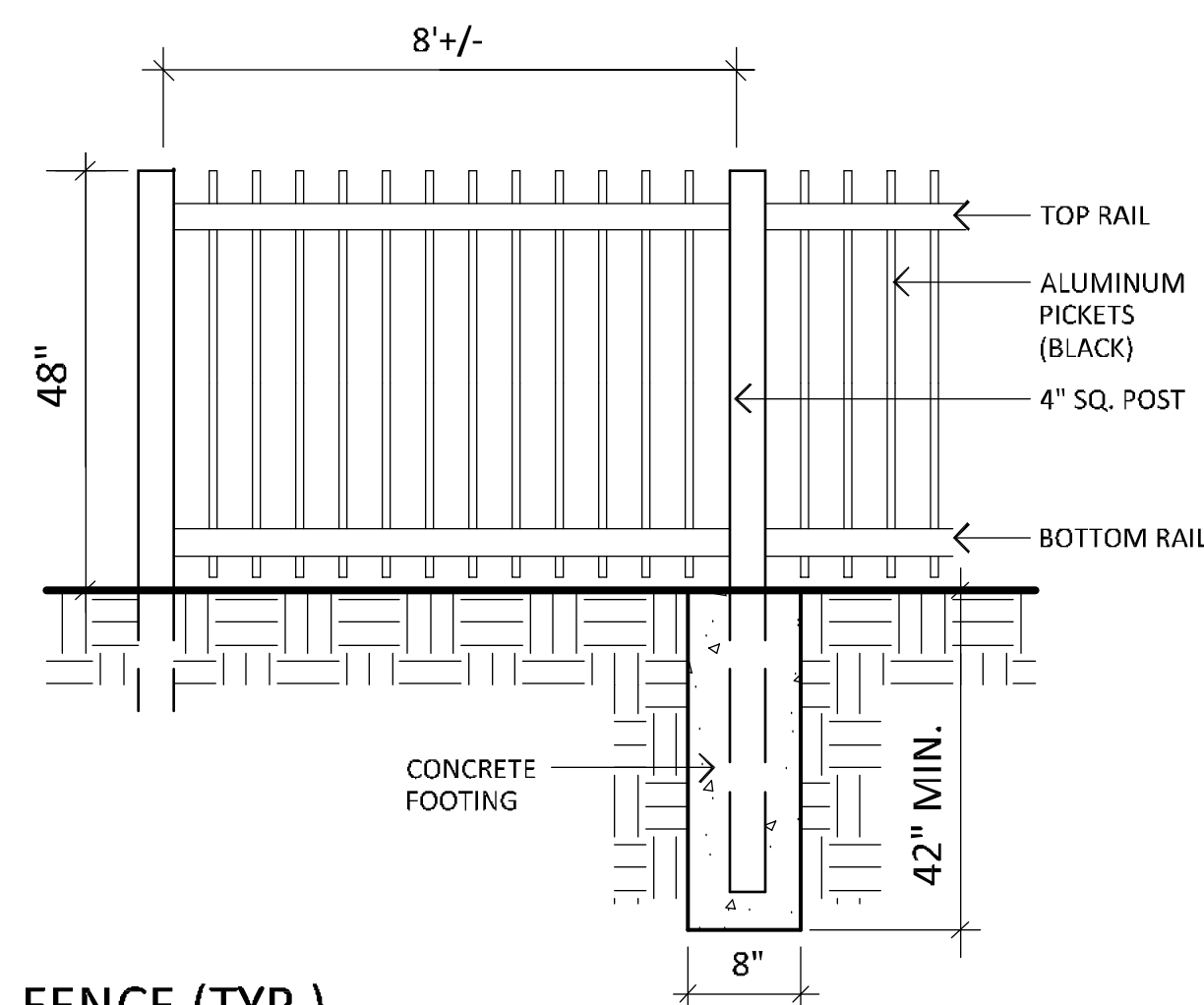


PLANTER: 25" WIDE, 11" DEPTH, 13" HT.

- NOTE:
- CORTEN PLANTERS BY VERADEK.COM.
 - PLANTER TYPE AND SHAPE MAY VARY BASED ON AVAILABILITY.
 - IF THE PLANTER IS NOT CORTEN, IT SHALL BE BLACK OR DARK GREY IN COLOR.

CORTEN PLANTERS (TYP.)

SCALE: NOT TO SCALE



FENCE (TYP.)

SCALE: NOT TO SCALE

GENERAL NOTES:

- SITE PLAN INFORMATION TAKEN FROM AN AUTOCADD FILE SUPPLIED BY REDNISS & MEAD.
- EXACT LOCATION OF PROPOSED PLANTINGS AND SPECIES TYPES MAY VARY FROM THIS PLAN BASED ON SITE PLAN REVISIONS AND/OR ACTUAL FIELD CONDITIONS.
- PLANT SPECIES SUBSTITUTIONS MAY BE MADE WITH THE APPROVAL OF THE PROJECT LANDSCAPE ARCHITECT PRIOR TO PLANTING. SUBSTITUTED PLANTS SHALL BE AT AN EQUAL OR GREATER SIZE AS NOTED USING A SIMILAR TYPE PLANT.
- PLANTING METHODS SHALL BE IN ACCORDANCE WITH THE "AMERICAN STANDARDS FOR NURSERY STOCK", LATEST EDITION, AS PUBLISHED BY THE AMERICAN NURSERY & LANDSCAPE ASSOCIATION.
- THIS PLAN FOR PLANTING PURPOSES ONLY. SEE PLANS BY OTHERS FOR ADDITIONAL INFORMATION.
- MULCH AREAS AROUND NEW TREES AND SHRUBS WITH A 2.5" THICK LAYER OF SHREDDED CEDAR BARK MULCH. NEW TREES SHALL EACH HAVE A 5' MIN. DIA. MULCHED BED AND NEW SHRUBS SHALL EACH HAVE A 3' MIN. DIA. MULCHED BED. AREAS WITHIN 4" OF TREE TRUNKS SHALL BE MAINTAINED FREE OF MULCH.

PLANT LIST

QTY	KEY	BOTANICAL NAME	COMMON NAME	SIZE	ROOT	REMARKS	PLANTING HEIGHT	MATURE HEIGHT
1	AR	ACER RUBRUM 'ARMSTONG'	ARMSTONG MAPLE	2 1/2-3" CAL.	B&B	NATIVE, RED FALL COLOR	13-14" HT.	40-50' HT.
2	CM	LAGERSTROEMIA 'NATCHEZ'	WHITE CRAPEMYRTLE	6-7' HT.	B&B	WHITE SUMMER FLOWERS	6-8" HT.	15-20' HT.
17	IS	ILEX CRENATA 'STEEDS'	STEEDS HOLLY	3-4' HT.	CONT.	EVERGREEN	30-36" HT.	5-6' HT.
28	SD	ROSA 'SWEET DRIFT'	SWEET DRIFT ROSE	15-18" HT.	CONT.	ROSE FLOWERS, LOW SPREADING	18" HT.	2' HT.
25	SG	PANICUM VIRGATUM 'HANSE HERMS'	HANSE HERMS SWITCHGRASS	1 GAL.	1 GAL.	NATIVE ORNAMENTAL GRASS	2' HT.	42" HT.
53	PH	PENNISETUM ALOPECUROIDES 'HAEMELN'	DWARF HAEMELN GRASS	1 GAL.	1 GAL.	ORNAMENTAL GRASS	12-15" HT.	18-24" HT.

REVISIONS:		DRAWING TITLE: LANDSCAPE PLAN	
		PROJECT: 460 SUMMER STREET STAMFORD, CONNECTICUT	
		SEAL: 	DATE: 10.31.24
ENVIRONMENTAL LAND SOLUTIONS, LLC Landscape Architecture and Environmental Planning 8 KNIGHT STREET, SUITE 203 NORWALK, CONNECTICUT 06851 Tel: (203) 855-7879 Fax: (203) 855-7836 info@elsllc.net www.elsllc.net		SCALE: 1" = 10' DRAWING NO.: LP.1	