

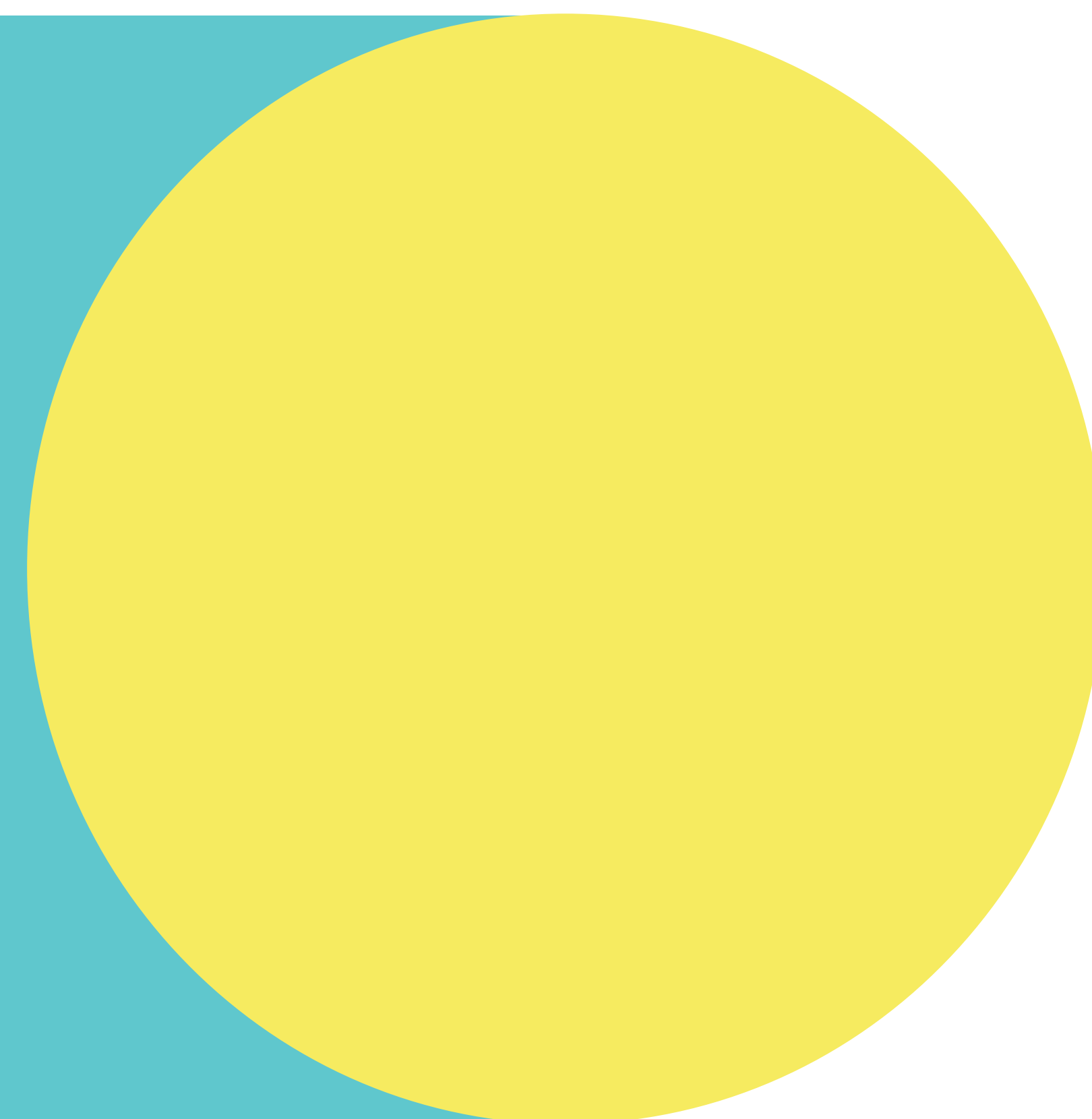
# CRASH LOCATION TRENDS

**BE A VISION ZERO HERO!**

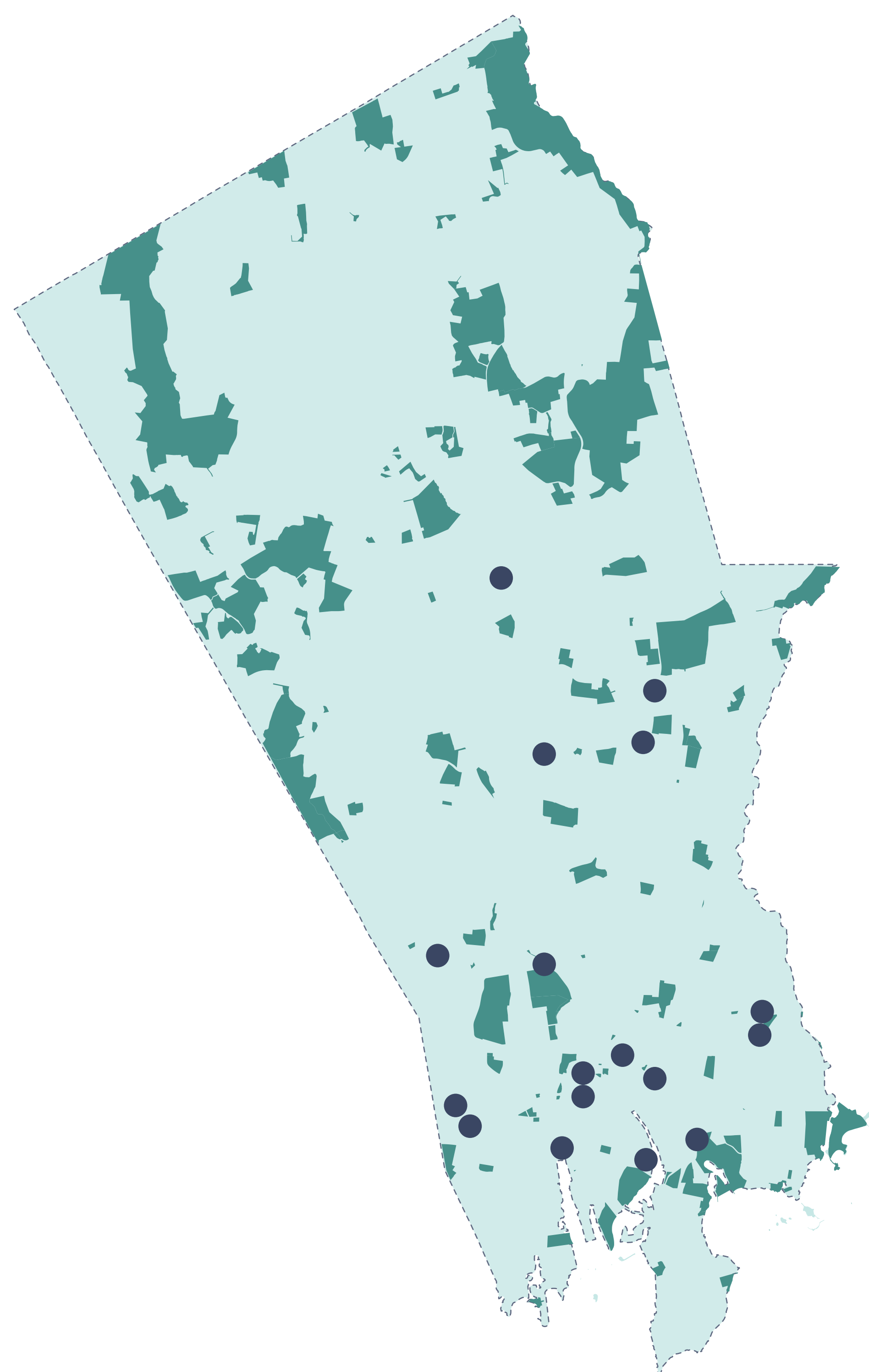


Parks, schools, and affordable housing are likely to generate trips by vulnerable road users, such as bicyclists, pedestrians, and children, understanding traffic safety trends in these areas is critical.

For each land use type, we see a higher portion of pedestrian crashes and KSI than conflicts with motorists or bicyclists. Between 2019 and 2023, 8% of pedestrian-related KSI crashes occurred near a school, 29% near parks, and 10% near affordable housing. The impact to pedestrians near these land uses is most pronounced around parks, where the portion of crashes and KSI for pedestrians is substantially higher than other modes.

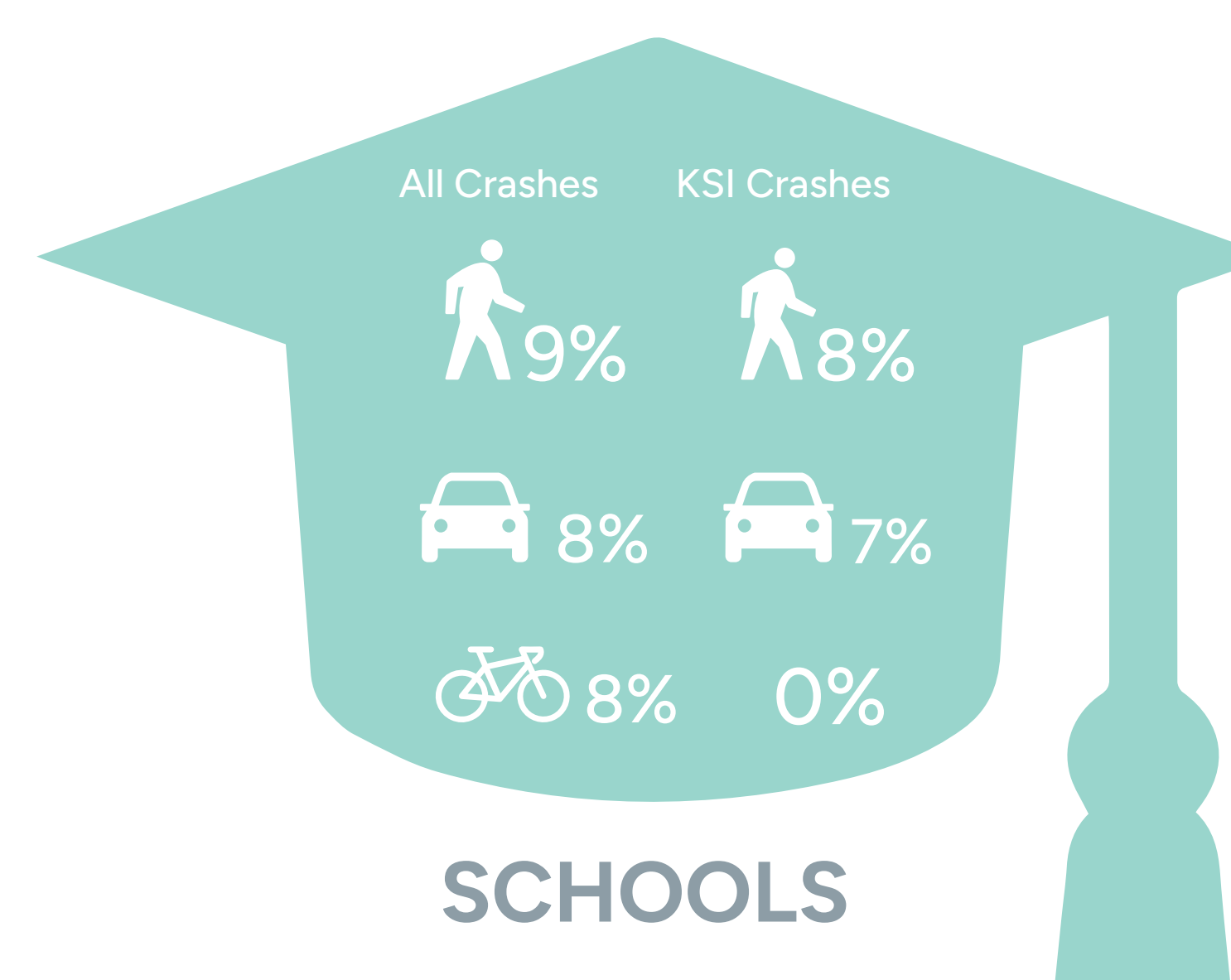
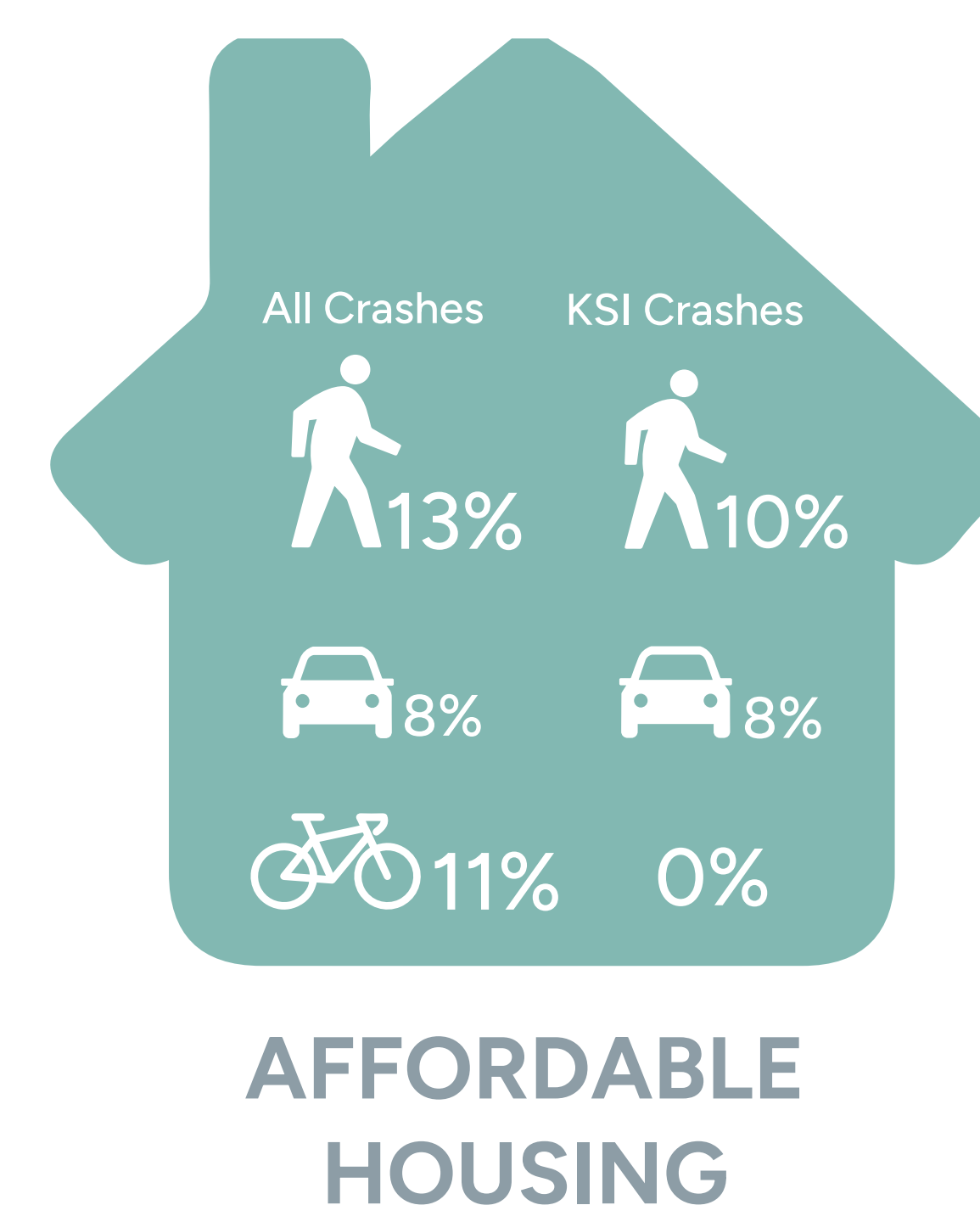
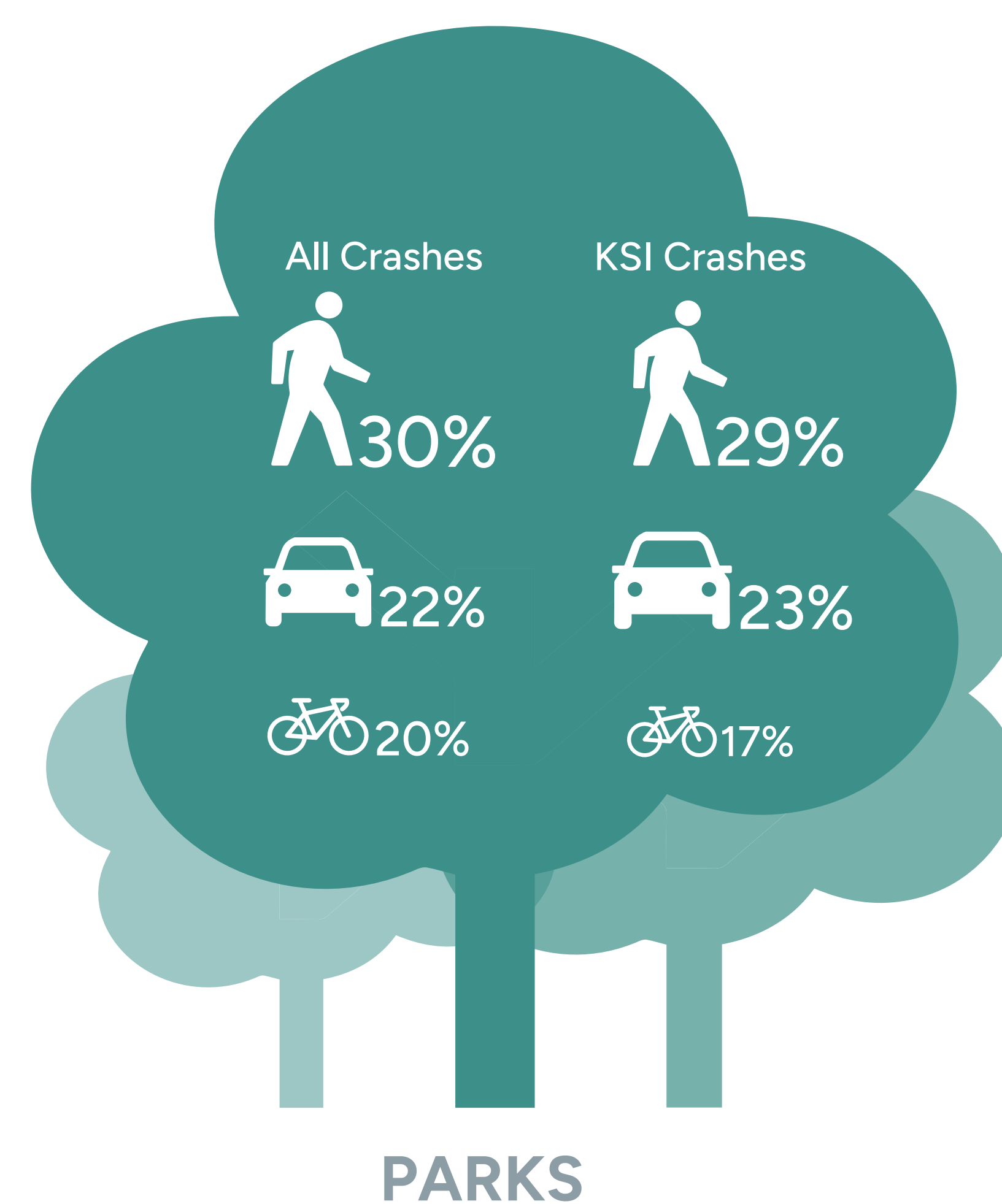


## Fatal Crash Location

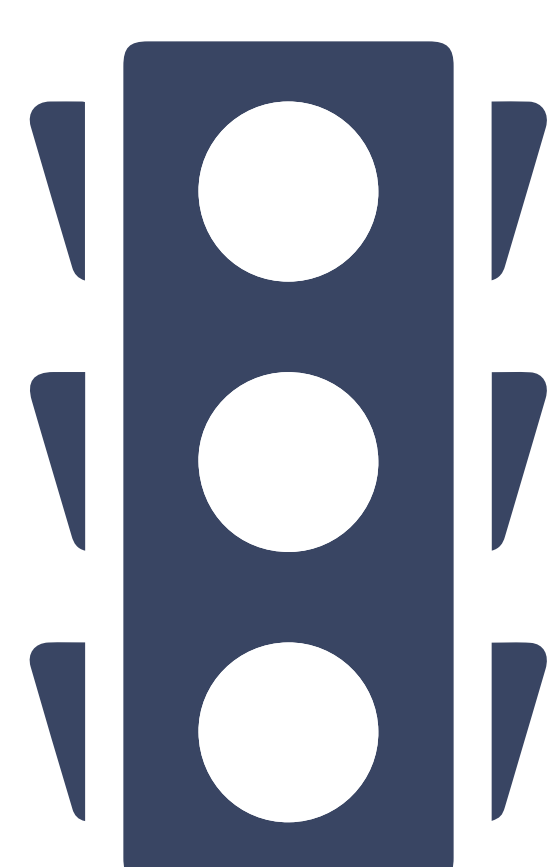


Between 2019 and 2023, Stamford saw **20** crashes resulting in fatalities, an average of 37 serious injuries and 4 fatalities annually. This represents one roadway fatality each year for every 34,000 residents. Stamford saw a spike in fatalities in 2022 and 2023, with 7 and 6 fatalities, respectively.

## Daily Destinations



## Intersection Crash Trends



While only **11%** of Stamford's intersections are signalized, **63%** of all crashes and **58%** of all KSI crashes occur there.



**89%** of Stamford's intersections are unsignalized but are the location of **37%** of all crashes and **42%** of all KSI Crashes.

# MOTOR VEHICLE CRASH DATA

## BE A VISION ZERO HERO!



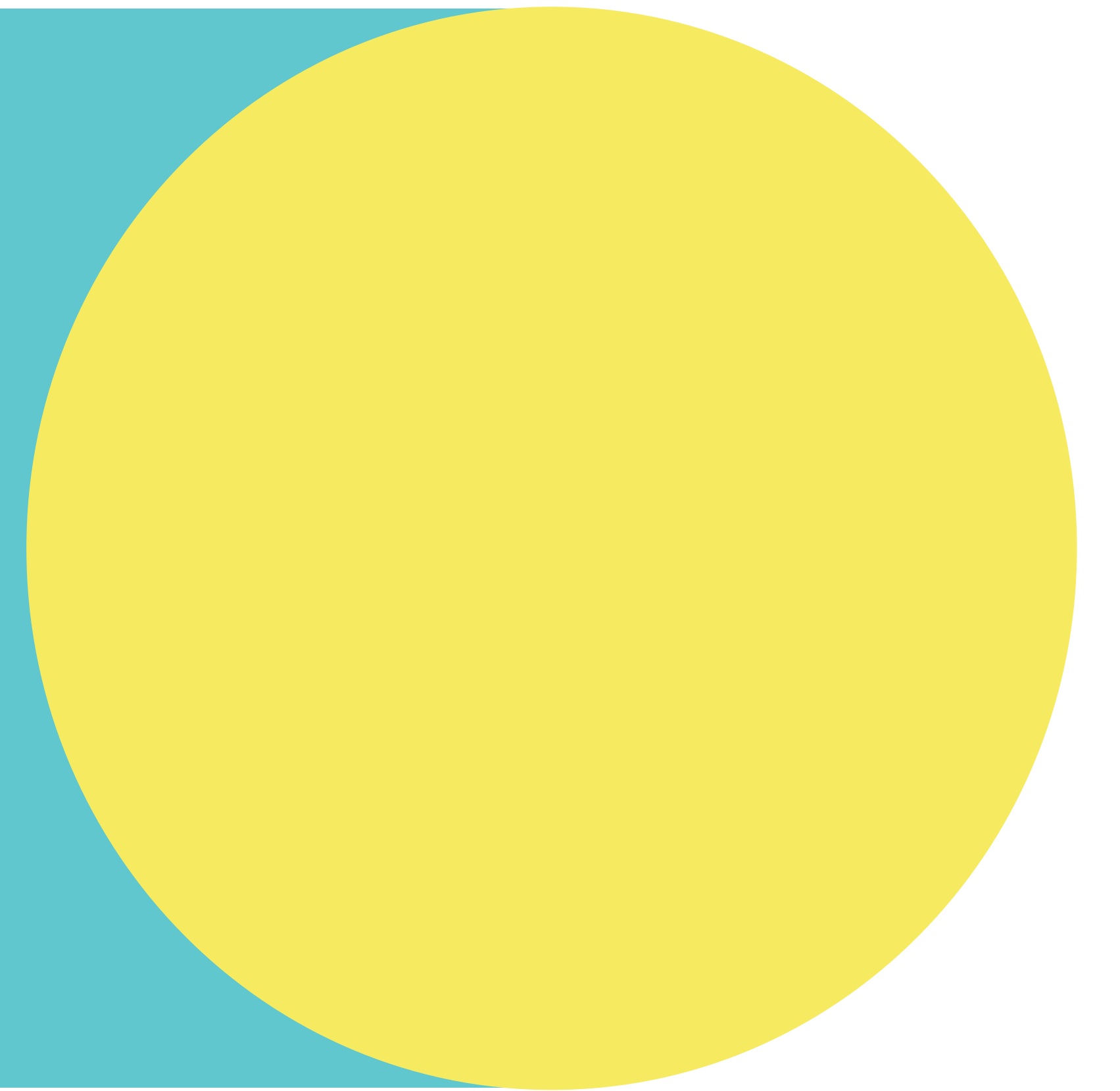
Between 2019 and 2023, the City of Stamford, CT, reported 206 fatal and serious injury crashes, an average of about 41 per year over the five-year period (37 serious injuries and 4 fatalities annually). Motor vehicle crashes comprise the vast majority of crashes, as well as the majority of serious injuries and fatalities (KSI). However, when pedestrian and bicyclist crashes occur, they tend to be more severe.



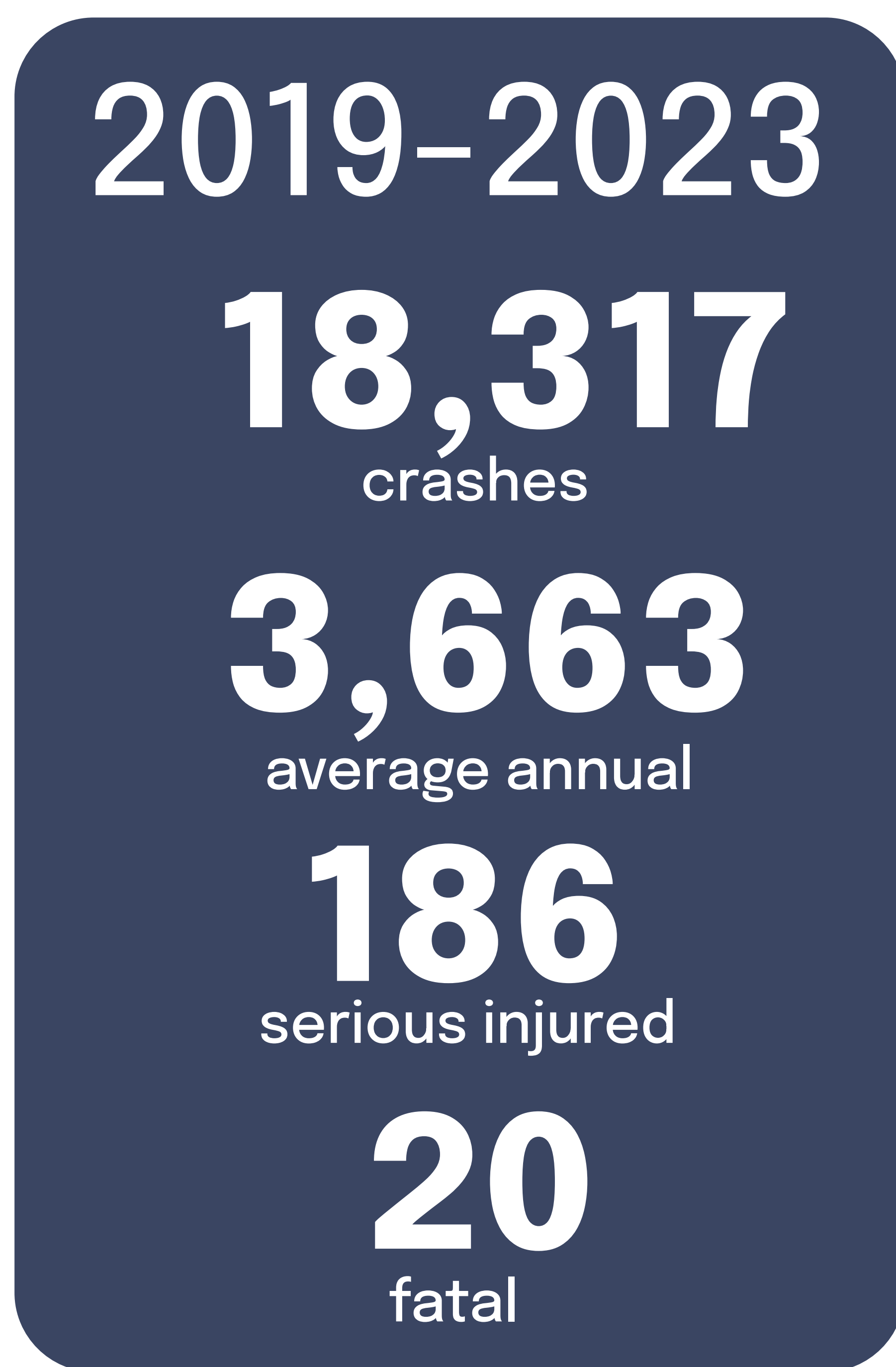
**KSI** - Killed or Serious Injury.

**Arterial** - A thoroughfare designed to move higher volumes of vehicular traffic.

**Vision Zero** - a strategy aimed at eliminating traffic fatalities and severe injuries while promoting safe and equitable transportation options.



### Total Crashes



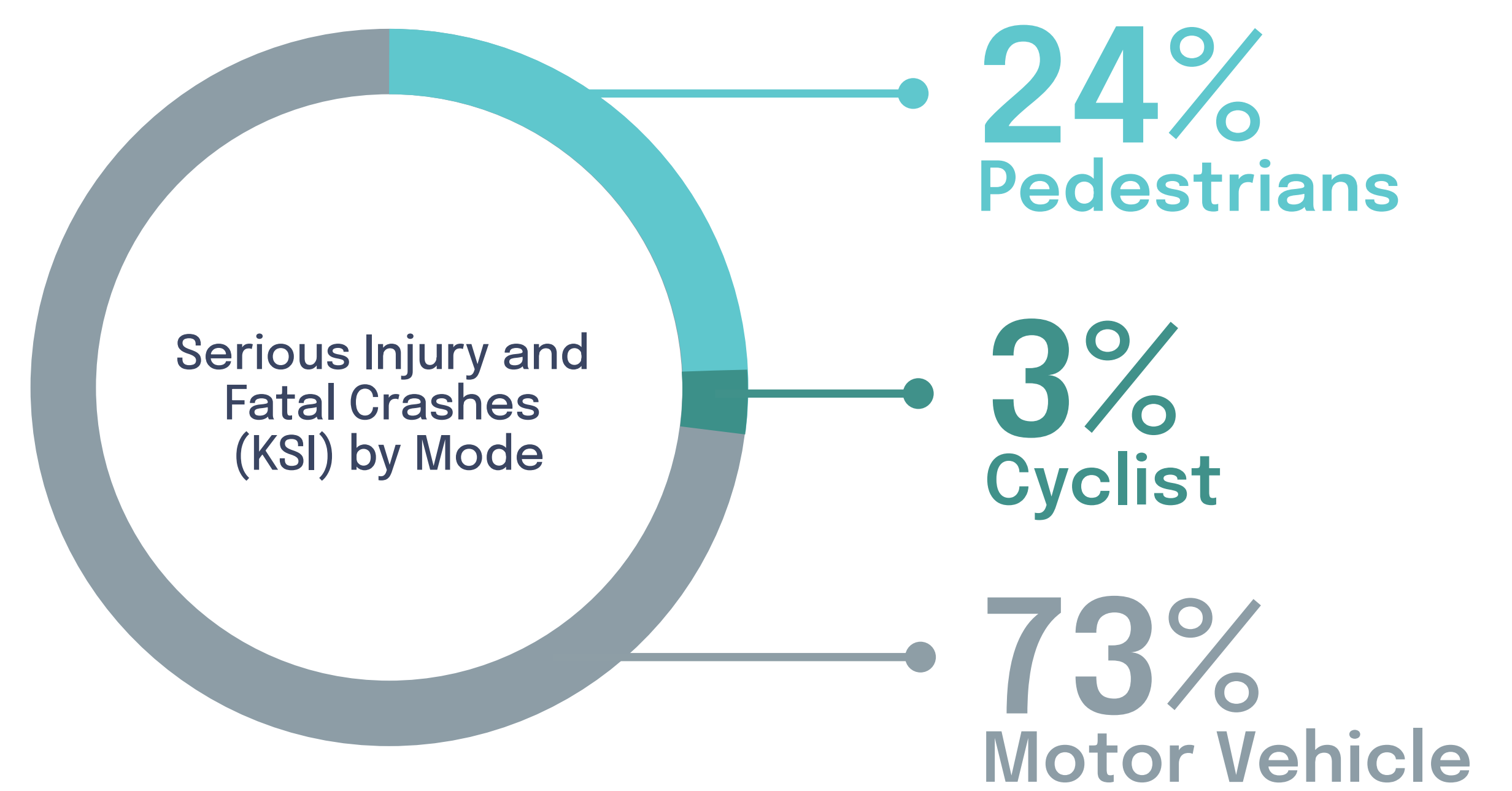
### KSI Crash By Mode



People cycling are 4x as likely to be involved in a KSI crash than motor vehicle occupants



People walking are 10x as likely to be involved in a KSI crash than motor vehicle occupants



### Segment Crash Comparison (Arterial Over-Representation)

Arterials comprise...



**14%**  
of Stamford's roadway mileage BUT host

**48%** All Crashes    **59%** KSI Crashes

### Motor Vehicle Crash Type Comparison



While rear end, angle, and sideswipe crashes are the most common motor vehicle crash types, **the most severe crash types are head on collisions and fixed object crashes (where a motor vehicle strikes a parked car, tree, or other non-moving object).**

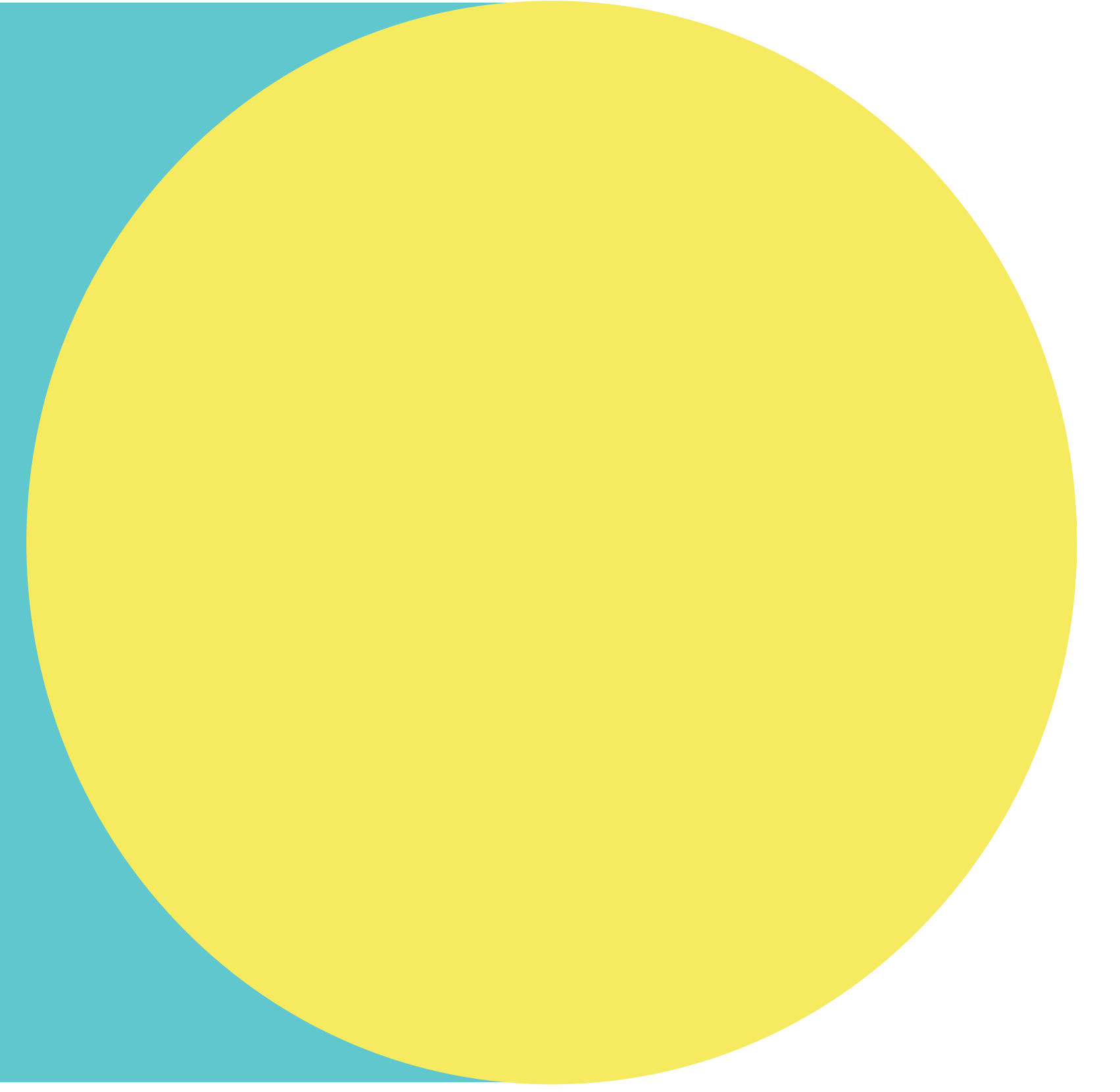
# VULNERABLE USERS

## BE A VISION ZERO HERO!

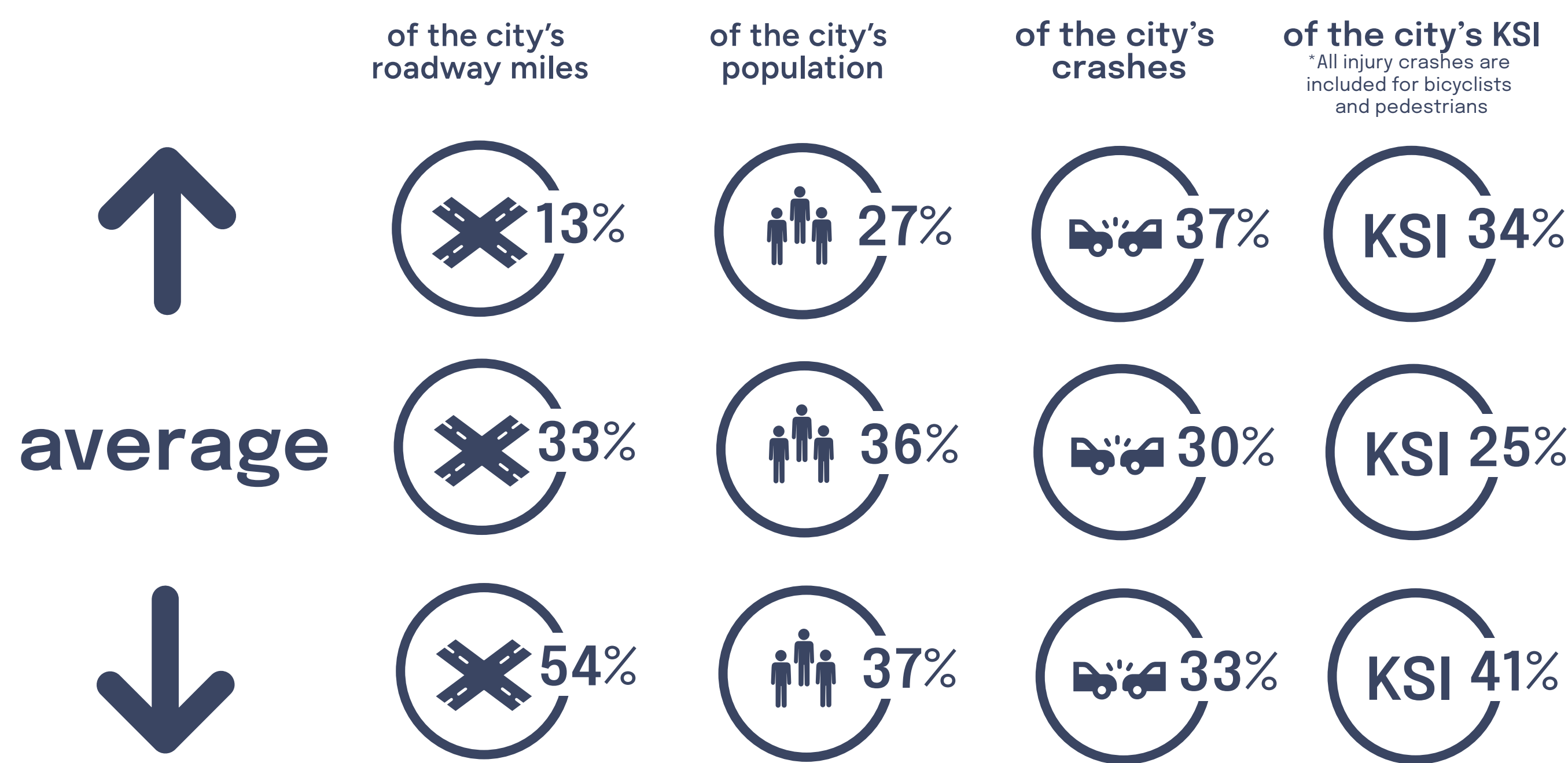


Trends in the time of day and day of the week when crashes are prevalent can be used to develop evidence-based regulations, optimize resource allocation, and inform infrastructure planning as well as heighten emergency response preparedness during peak crash times

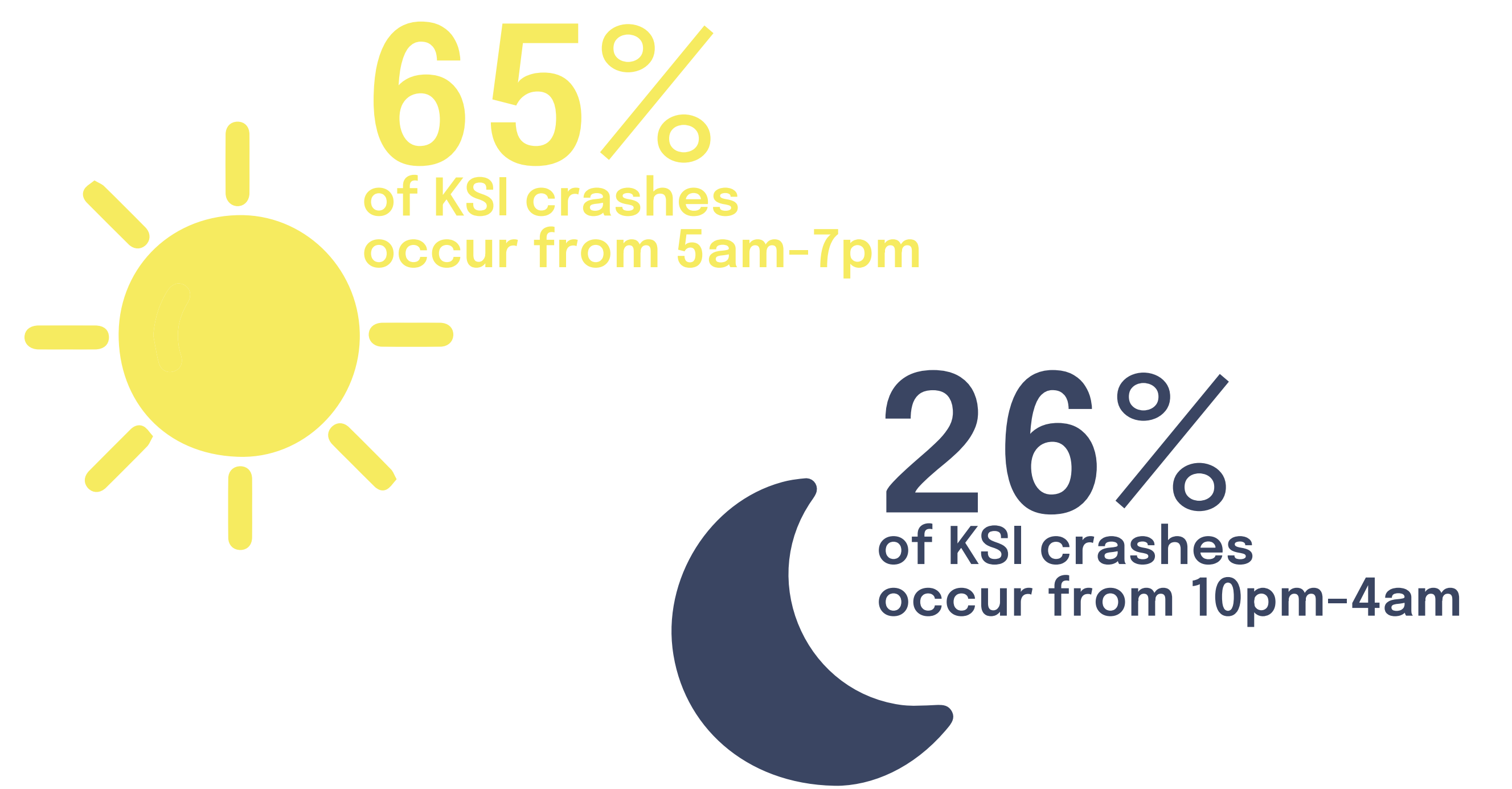
For all crashes, Stamford census tracts with greater equity needs experience an above average number of crashes relative to their population and share of road miles. This analysis can help prioritize safety measures in areas with the greatest need. For bicycle and pedestrian crashes, this trend is more pronounced, as an even greater share of bicycle and pedestrian crashes and KSI are occurring in census tracts with above average crash trends.



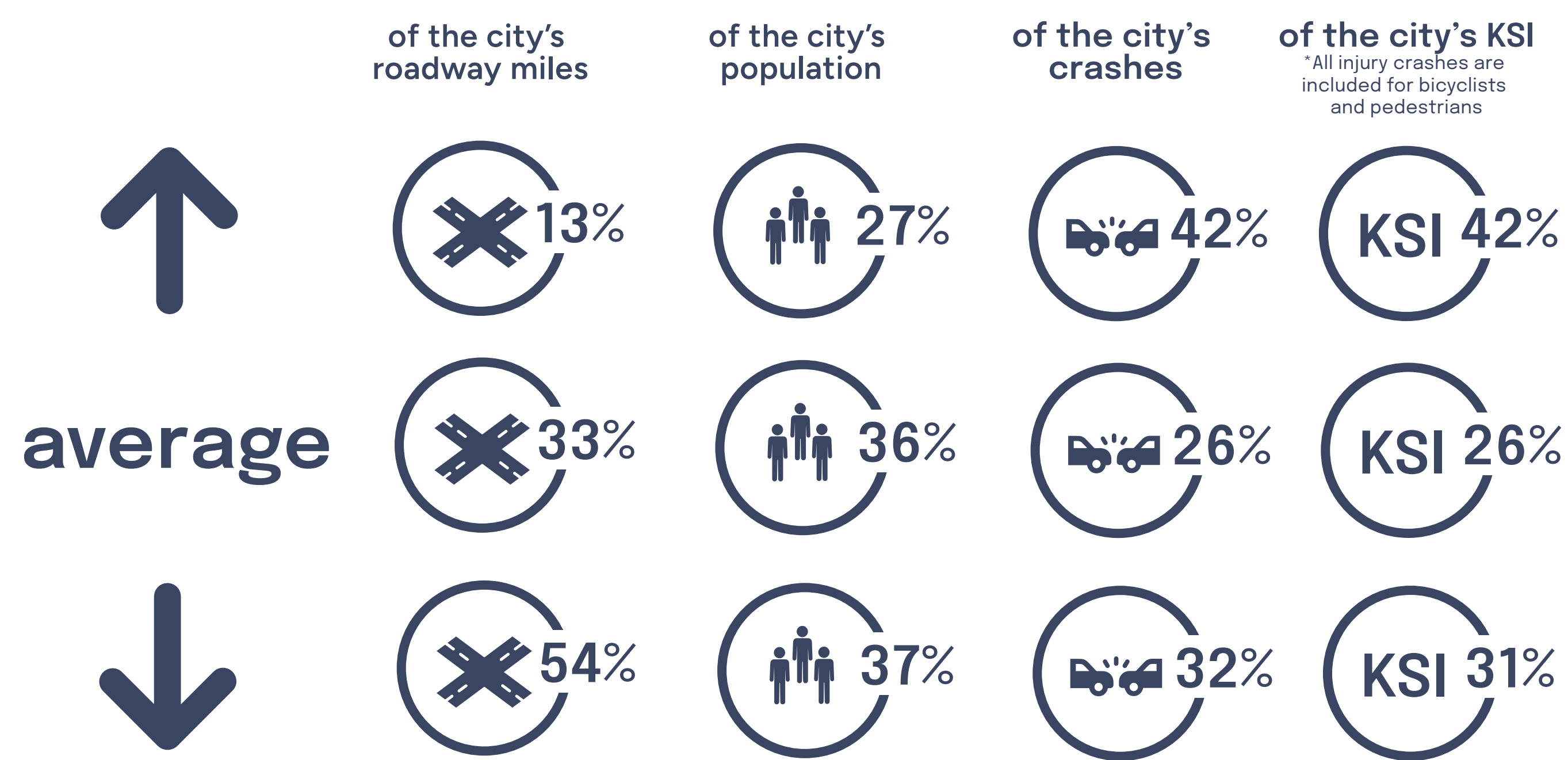
### Census Tract Equity Assessment: All Crashes



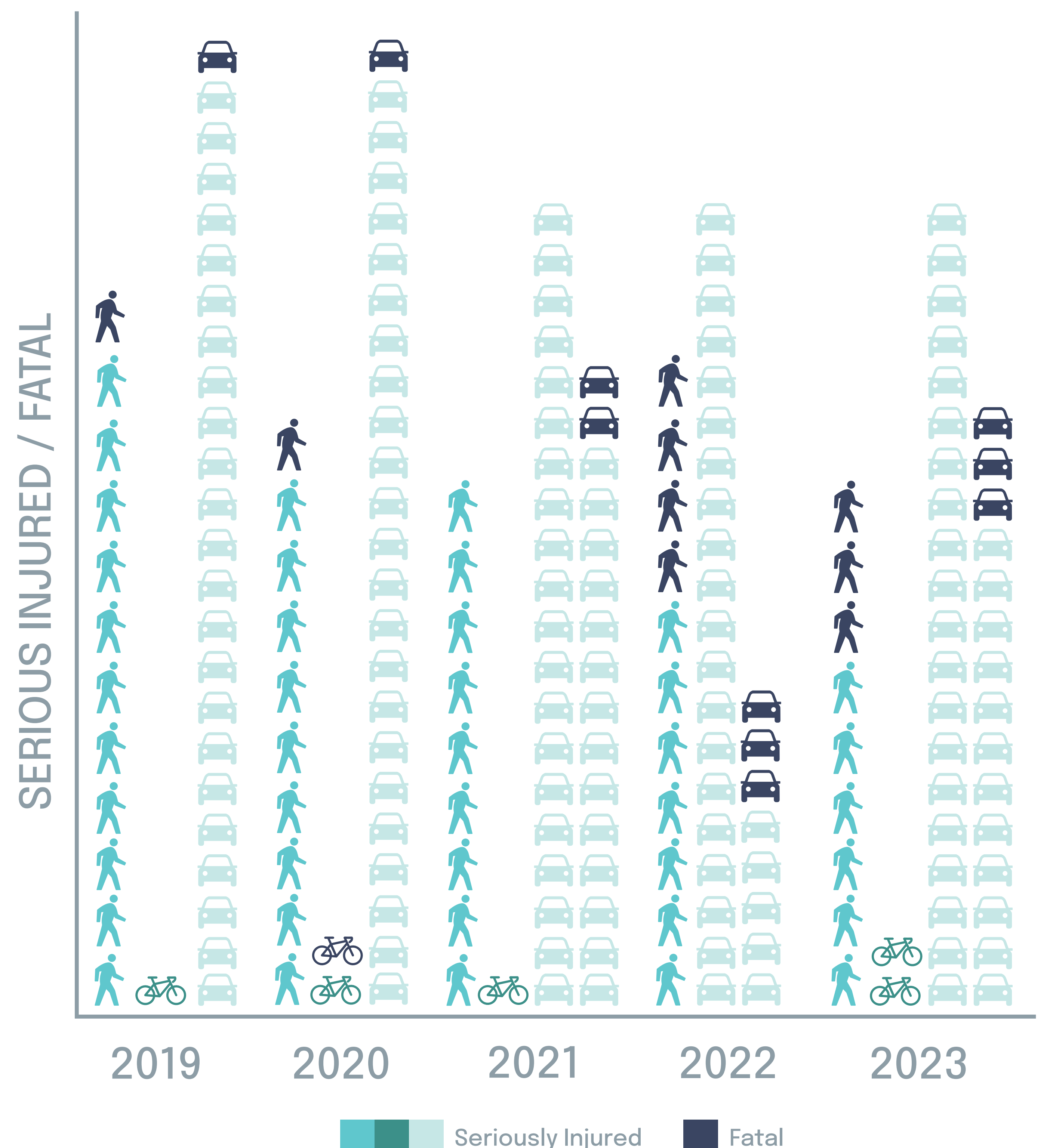
### KSI Crashes By Time Of Day



### Census Tracts Equity Assessment: Bicycle & Pedestrian Crashes



### KSI By Mode



### KSI Crashes By Day Of The Week

